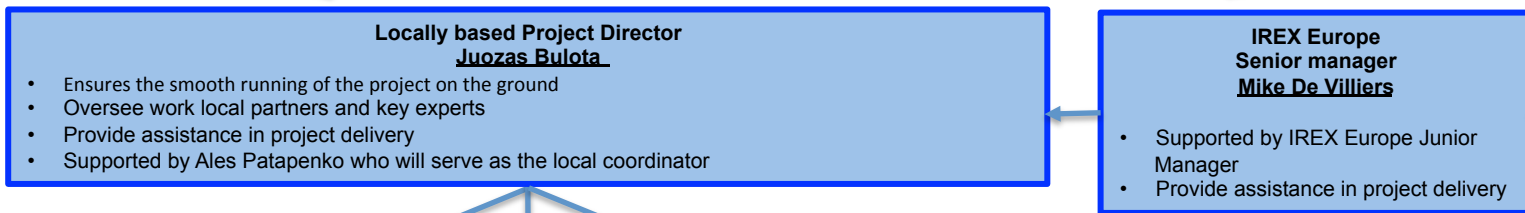


Project management



Lithuania

Latvia

Estonia

Local network

- LRT
- Delfi
- Re:Baltica
- TV Dozhd (Moscow)
- Nastoyaschee vremya (Prague)
- And others

- LTV
- Delfi
- Re:Baltica
- Meduza
- TV Dozhd' (Moscow)
- Nastoyaschee vremya (Prague)
- And others

- Delfi
- Re:Baltica
- Aru TV
- ETV+
- TV Dozhd' (Moscow)
- Maardu
- Nastoyaschee vremya (Prague)
- And others

- Memo 98
• Monitoring and Research

- Baltic Film, Media, Arts and Communication School Tallinn University
• Program implementation and delivery

- International Experts
• Monitoring and analysis Rasto Kuzel
• Capacity building- Marek Bekerman-media management
• Capacity building - Zurab Kodalashvili- TV production

- Stopfake.org
• Capacity building and training

Conflict sensitivity: all partners operate with a full understanding of the (potential) conflict context to avoid causing harm, including unintended consequences and second and third order effects. In terms of *gender sensitivity*, our approach is consistent with UNSC Resolution 1325, Women, Peace and Security. The gender balance of our team reflects how seriously we take the promotion of participation of women at all levels of decision-making, and we believe this will have positive impacts on the outcomes of the project.

